



Introducing our artists and their work

ABOUT COURAGE



Empowering child protection organisations



Developing practical skills in tertiary education



Engaging meaningfully with communities

Courage is a picture based child protection community engagement programme and toolkit that was launched in 2015. The programme has grown from strength to strength and is now being used in a number of countries around the world, in support of their child protection and community building efforts. In 2018, we are pleased to announce that Courage has been registered as a Not for Profit Company (NPC) in its own right, and we would like to recognise this during Child Protection Week 2018.

The 'Show of Courage' is an exhibition and auction, featuring a number of talented SA artists that takes place on the 24th May 2018. All proceeds from the auction will go towards providing new Courage toolkits and training to child protection organisations in South Africa and around the world.



www.couragechildprotection.com



www.showofcourage.com

ARTIST'S PROFILE



Nici Brockwell

Nici established her brand, Brockwell Porcelain in 2014 and is a full time ceramist, illustrator and more recently textile artist. Her work's content is based on people and places of South Africa. She tries to convey the energy, subculture and quirkiness of a nation like no other, while drawing on biblical references and symbols. "I like to think of the porcelain as a metaphor for the fragility of society". Nici has exhibited both locally in SA, and internationally in the UK and the US.



Mother and Child – porcelain vessel



Nici's contribution to the Show of Courage is a delicate porcelain vessel depicting a mother a child. As with all her work, the piece is layered and textured with symbolic themes woven into the body of the work, through patterning and layering of the vessel. "I'm being more intentional about form influencing the surface decoration and about the layering forming part of the story."



www.nicibrockwell.weebly.com



nicibceramic@gmail.com

ARTIST'S PROFILE



Jill Eckstein

Following a varied career as Springbok squash player, coach and successful entrepreneur, Jill turned her formidable determination to wildlife photography, and has spent the past decade honing this skill. Describing herself as an 'amateur photographer', Jill's work has been published in Getaway Magazine and she has won the Argus Wildlife Photography competition. Jill's perfect day is sitting quietly at a watering hole, in a game park, taking pictures of birds and animals.



Courage to Love - photos on canvas

Jill has contributed 4 photographs on canvass to the Show of Courage. "My passion is to show the love of animals towards their young and the beauty of these creatures in the wild. For me they are the personification of 'Courage', to survive under difficult circumstances and to protect their young at all times."

✉ cornerstone@telkomsa.net

ARTIST'S PROFILE



Helen Estcourt



Playing from the Heart –
oil on canvas



The Colour Purple – water colour

Helen has grown up exploring a range of different creative outlets including drawing, decoupage, embroidery, sewing and pottery. She studied water colours at Ruth Prowess in the Western Cape. Under the tutelage of Ryno Swart and Margie Johnston she moved into pastels and oil painting. She has attended a number of workshops with artists such as Mary Ann Border, Adolfo McQue and Cyril Coetzee.

Helen exhibits regularly at Kirstenbosch Gardens and the Constantia Art Society and at the annual Elgin Open Gardens Art Exhibition. Her work has been bought and hangs in a number of different countries around the world. For Helen the act of producing art is an act of courage, as she notes, "It is not the success of selling but the success of producing a piece of work that I and someone else loves that makes it so satisfactory.

✉ hestcourt@worldonline.co.za

ARTIST'S PROFILE



Colleen Lehmkuhl

Colleen runs a busy teaching studio in Bryanston, Gauteng. Working mainly in earthenware and using underglaze colours for surface decoration. Colleen's work has been on numerous Ceramics Southern Africa exhibitions, as well as group shows. Currently serving as Chair for the Gauteng Region of CSA, her 25 years in corporate business has proved very useful



The Shacks – ceramic vases

“My ‘Shacks’ are inspired by urban graffiti and give a voice to often unsaid thoughts in my head. If people can find a way of speaking about their problems and challenges, it often starts a dialogue towards finding a solution.”



www.potterystudio.co.za



colleen@potterystudio.co.za

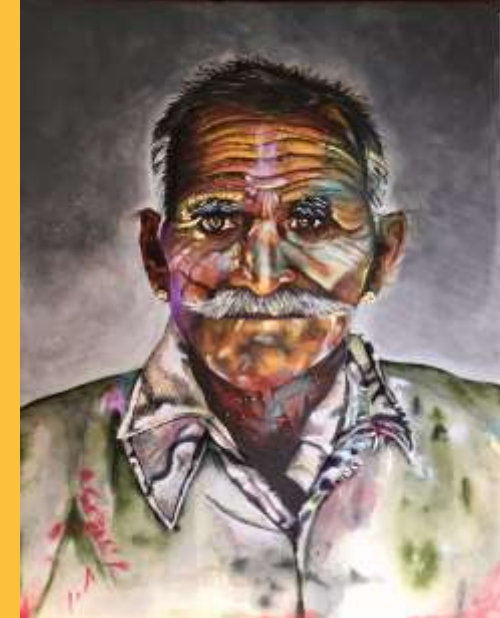
ARTIST'S PROFILE



Charlotte Middleton



Into the Woods – oil on canvas



A Life in Colour - print

During a break from the corporate world, Charlotte pursued her life-long love of art and ceramics. She joined the Pottery Studio in Bryanston, which led to a group exhibition in 2008 - Elemental: an exhibition of contemporary ceramics. Returning to the corporate world, Charlotte courageously balances her career as leader of marketing and communications for Arup SA, mother to twins and artist!

“Thankfully I work in an incredibly stimulating environment, surrounded by innovative thinkers where creative solutions and collaboration are actively encouraged. I consider my artistic pursuits not just a nice-to-do but imperative to keep me creatively sharp at the workplace, and a present, engaged mother at home.”
Charlotte’s current practice in oil and mixed media explores our dark spaces and what can be discovered there – if we have the courage and choose to look.

✉ charl.growingup@gmail.com

ARTIST'S PROFILE



Nkhensani Nkosi



LOVE is our DNA - ceramic vases



Nkhensani is the founder and creative director of Stoned Cherrie, an iconic, multi award winning SA lifestyle brand. She is a pioneer who has helped to shape the landscape of Afro urban consciousness. In the past couple of years Nkhensani has been developing range of hand painted and carved ceramics. She says of this range "Central to the shapes developed in this range is the heart - the universal symbol of love. It is an expression of my fundamental belief that we are of LOVE and our true nature, at the core of our DNA, is LOVE.

The process of meticulously carving anything MUST be an expression of love, simply because of the time it takes and the dedication and patience required to complete the process. I have also been inspired by various tribes of the world who have an innate knowledge of the sanctity of life. I love ornate tribal design, and how similar the aesthetic of tribes from all over the world is, as though emanating from the same source. In the products developed I have fused my appreciation of this artistic expression and the various spiritual belief systems that influence my life.

ARTIST'S PROFILE



Lee Pardini



Bubble Girl – oil on canvas



Madiba – charcoal

Lee is an exceptionally talented multi-media artist who explores her passion for creativity through a variety of mediums including pencil, oil, water-colour, clay sculpture, acrylic, charcoal and even furniture design. She considers herself as being self-taught but has recently joined a local art collaborative to hone her painting skills. Her vibrant 'portraits of famous people' have gained wide appeal and support for their emotive qualities, and striking use of colour.

Lee has contributed a number of pieces to the Show of Courage, testament to her enthusiasm for both the cause and her creative energy. Lee often describes how difficult she finds it to just 'sit still', "original thoughts and ideas literally explode out of me, and I have to find a way to express them". It is this passion and energy that is abundantly displayed in all of her work.

✉ leeannepardini@gmail.com

ARTIST'S PROFILE



Ali Schilperoort

Ali studied at the Johannesburg School of Art, Ballet and Music and completed a Fine Arts degree at the Johannesburg College of Art. She paints on commission and has had 3 previous exhibitions, experimenting successfully with watercolours, acrylics and oils. Colour and texture is her passion, she explores it as emotive rather than form in her work.



Harvest of Hope – oil on canvas

Ali's contribution to the Show of Courage is titled 'Harvest of Hope', a rich celebration of purple hues which represent creativity and courage to her. "I work with colours for their endless and exciting combinations, the never ending ability to generate unique forms. Flowing colour is my perfect medium for exploring the complexities of courage and love."

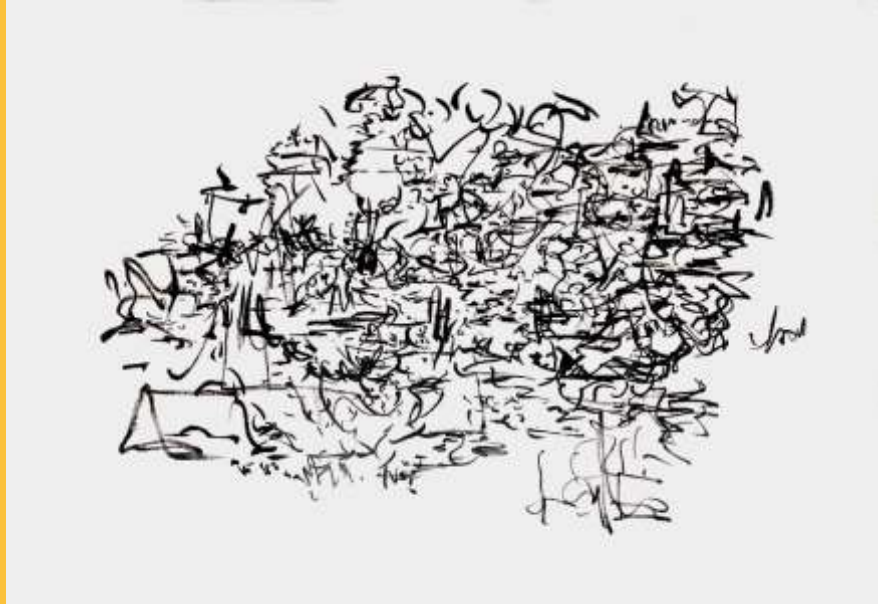
✉ alis@mweb.co.za

ARTIST'S PROFILE



Emma Schilperoort

Emma is a newly graduated visual communication design student from Stellenbosch University. She has been immersed in the art and design world since birth, as both her parents are in the creative industry. Most of her illustrations and designs are inspired by the topic of mental wellbeing, especially focusing on millennials and how they can recognize and take care of their own mental health.



Pacing – pen and ink illustration

Her contribution to the “Show of Courage” exhibition, is an abstract illustration documenting someone’s movements as they pace up and down a room nervously. “The concept of the illustration is to convey that anxiety a person with Generalized Anxiety Disorder constantly feels and the courageous battle they wage every day.”

✉ emmaschilperoort@gmail.com

ARTIST'S PROFILE



Andy Scott



Leap of Faith – oil on canvas



Beyond the Waves – print

Andy has over 20 years experience as an international commercial artist caricaturing celebrities, assemblies, royalty, as well as appearing on TV shows. She has developed newspaper cartoons, personal portraits and company commissions. Her work is inspired by the impressionists of the 19th Century, with a modern twist in subject matter and her use of light and movement.

Andy is contributing a few pieces to the show of Courage, these include “Leap of Faith” and “Beyond the Waves”, both stunning depictions of courage in action. “As a mother and artist, I explore courageous subjects every day. These paintings bring these themes together for me, helping our children navigate this increasingly complex world that we live in, but remaining true to our adventurous spirit and constantly pushing the boundaries of our potential.”



www.quick2draw.co.uk



andy@andyart.co.uk

ARTIST'S PROFILE



Kate Shand



There can't be loss without the other – porcelain dolls

Kate is a freelance writer, artist and community art counsellor. After the suicide of her 14-year-old son in 2011, she started writing as a lifeline – her words became a book and in 2013 *BOY* was published. Kate has always painted but five years ago she started working with clay, and it has become her preferred medium. She currently works as an independent consultant and facilitates groups at Lefika la Phodiso Community Art Counselling and Training Institute, in the spaces in between she makes stuff.

 www.lefikalaphodiso.co.za  kateshand123@gmail.com

“When I make the effort to create something, I can feel my power and strength gently rising and flowing back towards me. It’s a tenuous thread but it’s there, and at times it’s a lifeline. These dolls are a culmination of years of creating from whatever I could lay my hands on, tissue paper and string dipped into porcelain slip and fired. They were so fragile and delicate, yet despite the extreme temperature, they retained their shape after the tissue burnt away. Courage is about getting up and putting one foot in front of the other when there’s nothing left inside. The two pieces go together. There can’t be loss without the other.”

ARTIST'S PROFILE



John Shirley

John Shirley has been working with clay for over 40 years. He teaches at The Pottery Studio, Bryanston and lectures in ceramics part time at the University of Johannesburg. In 2010 John was accepted as a member of the International Academy of Ceramics, and was also honoured as a Fellow of Ceramics Southern Africa. John's commitment is to the pursuit of excellence in his work, and in this the importance of the journey exceeds that of the destination. Knowledge and skills transfer are what make teaching an important part of John's own journey.



What Lies Within - bone china bowl

"Working exclusively with bone china I am intrigued by the interplay of light with my work. I use a number of surface treatments to enhance the ethereal quality that I am aiming for. My work looks extremely fragile but due to the high firing (1260 degrees C), it is actually very strong. To me, this is very much like a person showing Courage – they may appear fragile on the outside, but actually on the inside they are being incredibly brave and strong."



www.johnshirleyceramics.com



johnshir@gmail.com

ARTIST'S PROFILE



Nic Sithole



Circle of Life – terracotta pot



Nic has been working with clay for over 30 years and has been influenced to some extent by all the studios he has worked in. As a young boy, Nic's family moved a lot and he is fluent in 9 languages. Nic brings his rich African heritage, as well as the vibrant urban life around him, into his work. Nic's work is either thrown on the potter's wheel or coiled, highly burnished using an agate stone, and decorated in his own modern style.

Nic's contribution to the Show of Courage is "The Circle of Life", a terracotta pot, highly burnished and decorated using a circular pattern. Nic relates on a deeply personal level to the 'Courage' concept, in his own life as a young boy herding his uncle's cattle in the KZN hills, as well as an adult, determined to make a living as a ceramic artist in a challenging world. Nic works from his studio in Mamelodi where he lives with his wife, 2 daughters and son, and 3 Grandchildren.



www.potterystudio.co.za



nic@potterystudio.co.za

ARTIST'S PROFILE



Dee Blackie

Dee is the founder and director of Courage, the child protection community engagement programme that will benefit from this celebration of courageous creativity. Dee also enjoys exploring a range of creative outlets from ceramics and beadwork to her recent passion, oil painting. Her work is very symbolic and uses colour and pattern to express strong emotions. Her inspiration comes from the impressionist masters of the 19th century who used light and movement to capture the sensory effect of a moment.



Mother Sun – oil on canvas



Sister Moon – oil on canvas

Her contribution to the show are two paintings depicting mother's breastfeeding their babies. "I have always thought that breastfeeding is the most beautiful expression of love and care, yet many ostracise and humiliate mothers who dare to feed their children in public. As with all my work, these paintings represent the entanglement of my two great loves, creativity and social activism."



www.deebackie.com



dee@bobi.co.za

ARTIST'S PROFILE



Isabeau Blackie

At 12 years of age, Isabeau is one of the youngest of our exhibitors in the Show of Courage. She is a keen designer and recently turned her attention to oil painting. She is fascinated by the play of colour and light and this is apparent in all of her work.



Sunset Dance – oil on canvas



Her contribution to the Show of Courage, Sunset Dance, brings her two creative passions together, painting and dancing in a celebration of colour. “Courage is doing things your own way, even when people tell you they don’t like it. The most important thing is that you like it and that it is saying what you want it to in a special way”.

ARTIST'S PROFILE



Lefika La Phodiso



Lefika La Phodiso (meaning rock of holding or healing) is Africa's first psychoanalytically informed community art counselling centre. Established in 1994 Lefika's mission is to build national capacity for empathy by training groups of Community Art Counsellors (CAC) dedicated to psychosocial transformation; and to facilitate community-based counselling programmes which also act as practical placement sites for trainees.

Over the years teachers, refugees, children at risk, children affected by violence, children with disabilities, young offenders and HIV positive adolescents have benefitted from Lefika's programmes. The desire is to provide symbolic extended family structures that can unlock strength and resilience and thereby reduce violence and trauma; create stronger societal connections and ultimately a safer society. Lefika have contributed to the '100 Hearts' Courage Installation.

ARTIST'S PROFILE



Many of the artists who contributed to the 100 Hearts installation are teenagers based at 'The Creative Mentorship Hub'. The project, situated in the Anstey's building in Newtown, supports at risk youth of the inner city of Johannesburg and Orange Farm with resources. It is a safe space that uses art to support the school curriculum and provide mentorship in the creative arts space.

The organisation is currently renovating a library where story telling workshops and reading and writing clubs will be held. The project is led by Tshepo Motaung, an artist and Community Art Counsellor.

✉ tsh.motaung@gmail.com



100 HEARTS



The root of the word 'courage' is cor, the Latin word for heart. When developing the Courage programme, we asked a number of child protection officers, which included social workers, police, teachers, health care practitioners and activists, what 'ingredient' they needed to help them do their work every day? Without exception each person spoke of courage to face what they do in their work with children, families and communities.

The 100 Hearts Installation has been developed in collaboration with all of the artists taking part in the Show of Courage. Each artist was asked to develop a small (20 x 20 cm) painting that contained a heart and represented courage to each of them.

Each heart painting represents a Courage Toolkit that will be donated to a child protection organisation to help them in their child protection efforts.

A child in silhouette holds a yellow heart-shaped balloon against a grey background with purple and yellow splatters. To the right, a yellow sign with a purple heart and the word 'courage' is displayed. The text 'A SHOW OF' is written in large, bold, purple letters above the sign.

**A SHOW
OF**

courage

WWW.COURAGECHILDPROTECTION.COM